

GeoCT-I™ A Breakthrough in Seismic Refraction Imaging

GeoCT-I is a full-automatic refraction travel-time tomography application on Windows, presenting a new way to image the Earth. After you activate the software and tell where the data is coming to, it will wait when the data is not available, load it when it appears in the folder and then image the Earth right away! Shot by shot, you can see the progressive image improvement in the field and find out where it needs an extra shot and when it is enough. It simply advances the concept of seismic imaging.

Smart Java software

Automatic flow control

Automatic file loading

Automatic time picking

Automatic QC picks

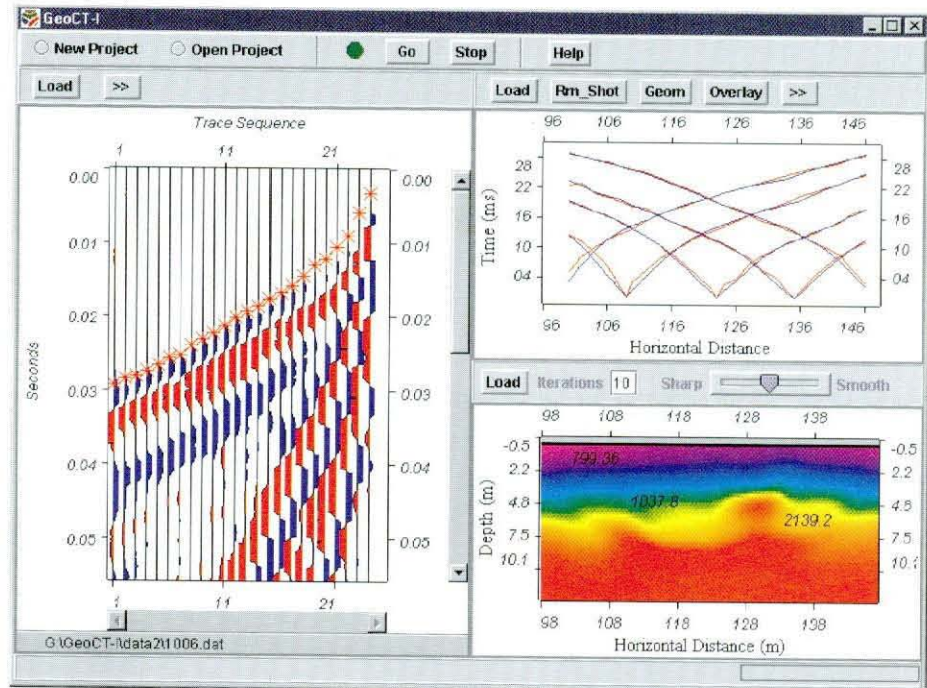
Automatic tomography

No required parameter

No geometry, build it

No shot or channel limit

No expert needed



Features:

- GeoCT-I integrates SEG-2 data display, picking, travel-time QC, and tomography in a single automatic process within the same display window.
- Allows you to create or edit survey geometry or topography if it is missing in a SEG-2 header, to adjust display parameter or apply AGC if you want to.
- You can interfere an automatic process at any stage or change it to a manual process, applying manual or semi-auto picking, removing a shot or modifying shot location, adjusting tomography resolution.

Benefits:

- For the field work, GeoCT-I solves your imaging problems right on site, and you do not need to be an expert to apply this state-of-the-art imaging technology.
- For research or education, GeoCT-I presents an efficient and simplified imaging approach, but it also offers many options for performing detailed studies.

